

**The motor theory and the auditory theory of speech perception**

How do we perceive speech according to the motor theory?

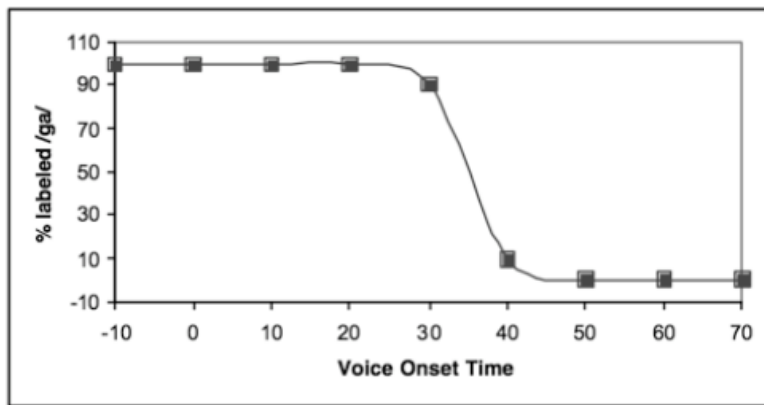
How do we perceive speech according to the auditory theory?

What is one problem for the auditory theory?

**Categorical perception**

What happens to the sounds within categories and the sounds between categories in categorical perception?

% labeled /ga/ in /ga/-/ka/ continuum



/ga/ <<<<<>>>>> /ka/

If I pair two adjacent sounds from the above figure, which pair do you think you will be better at correctly saying different (e.g., -10-0, 0-10, 10-20, etc.)?

**Syntax**

What is syntax?

Can you identify noun phrase and verb phrase?

**Language and cognition**

What is one evidence in favor of linguistic relativism, or the Sapir-Whorf hypothesis (people who speak different languages think about the world differently)?

What is one example from the class that supports the hypothesis that individuals from one culture will start to think like individuals from another culture if they are primed with appropriate schemas?

### **Social influences**

What is conformity?  
What is obedience?  
What is compliance?

### **Visual perception and social influence**

What is informational influence?  
What is normative influence?

### **Milgram's teacher-learner studies**

What happened in the studies?  
What idea did Milgram's studies disconfirm?

### **Mere presence of others**

What is social inhibition?  
What is social facilitation?  
What is one way to potentially overcome social inhibition and show social facilitation?  
What is social loafing?  
What is deindividuation?

### **Bystander effect**

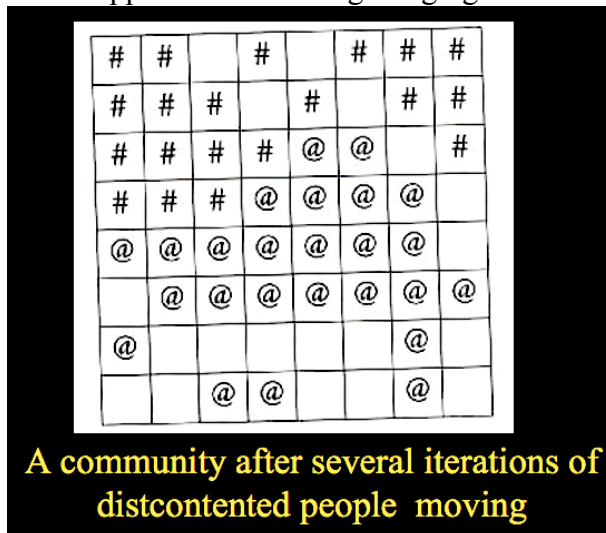
What is the bystander effect?  
Why does this phenomenon takes place?

### **Complex adaptive systems**

Can you provide two examples of crowding behavior that you see everyday?  
What are the properties of complex adaptive systems?

### **Dissociation between behavior at individual level and behavior a group level**

What happened in Schelling's segregation simulation?



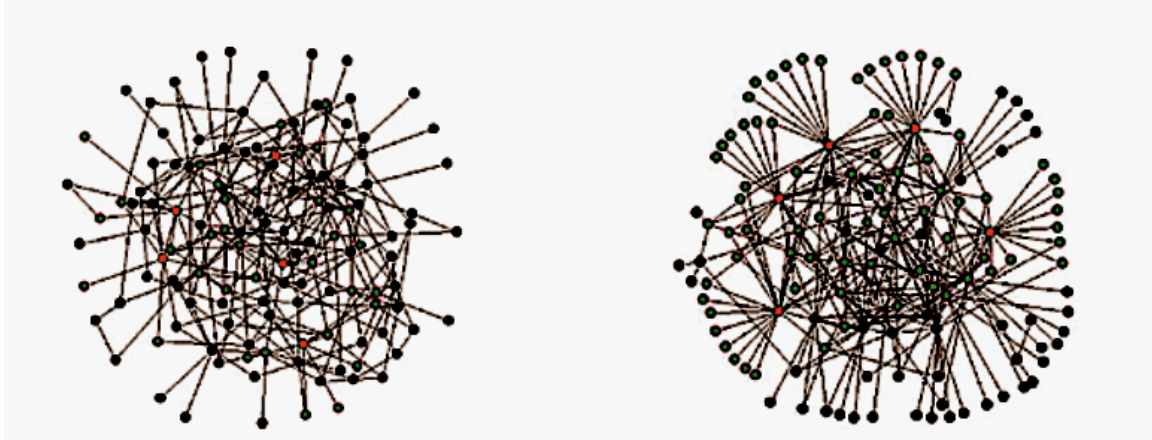
Can you infer collective behavior from individuals' behavior alone?

### **Preferential attachment**

What is preferential attachment?

Can you give two examples that support the preferential attachment model?

Can you distinguish the graph that results from preferential attachment from other types?



### **Innovation and imitation**

What happens when you only innovate?

What happens when you only imitate?

### **Specialization**

What is the Jack-of-all-trade strategy?

What is the specialization strategy?

Which strategy will be more likely to successfully complete the task?

What is one advantage of specialization and modularity?